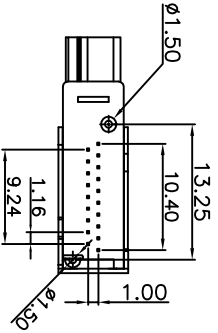
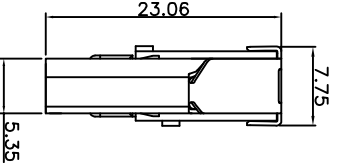
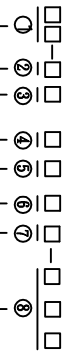




- SPECIFICATIONS:**
- ELECTRICAL CHARACTERISTICS
    - 1-1. CURRENT RATING: 0.5 AMP
    - 1-2. VOLTAGE RATING: 40 V
    - 1-3. CONTACT RESISTANCE: 30MILLOHMS MAX
    - 1-4. INSULATION RESISTANCE:100M MIN.@500V DC
    - 1-5. DIELECTRIC WITHSTANDING VOLTAGE: 500V AC FOR 1 MINUTE
  - MECHANICAL CHARACTERISTICS:
    - 2-1. INSERTION FORCE : 4.5KGF MAX.
    - 2-2. WITHDRAWING FORCE : 1KGF ~ 4KGF.
    3. LIFE TEST: 10000 CYCLES
    4. OPERATING TEMPERATURE: -25°C TO +85°C
    5. PART NO. DESCRIPTION:



**HDMI 侧插式成品料号**



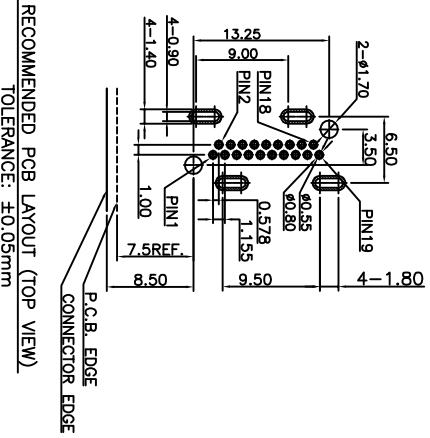
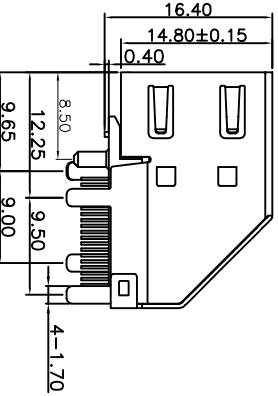
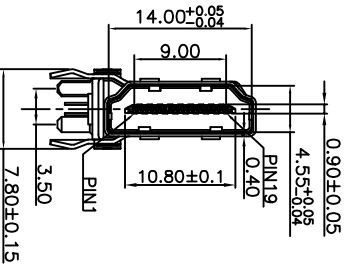
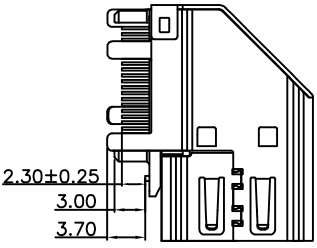
- ① SERIES NO: \_\_\_\_\_
- 16 : 侧插式
- ② 外壳材质:
1. 黄铜
  2. 铁材 (光面)
  3. 铁材 (麻面)
  4. S90C
  5. 碳钢

- ③ 外壳: 电镀
1. NICKEL PLATED(镀镍全部镀可焊镀镍小<math>90^{\circ}</math>)
  2. GOLD FLASH PLATED
  3. GOLD PLATED 0.6u"
  4. GOLD PLATED 足1u"
  5. GOLD PLATED 足3u"
  6. 镀亚光镍(连接镀)

- ④ 端子: 电镀规格
1. 接触端1u"金, SMT端 亮锡
  2. 接触端3u"金, SMT端 亮锡
  3. 接触端5u"金, SMT端 亮锡
  4. 接触端15u"金, SMT端 亮锡
  5. 接触端30u"金, SMT端 亮锡
  6. 接触端1u"金, SMT端 镀镍
  7. 接触端5u"金, SMT端 镀镍
  8. 接触端15u"金, SMT端 镀镍
  9. 接触端30u"金, SMT端 镀镍

- ⑤ 特殊要求:
- 0: NO MARK
- 1: DATE CODE
  - A: 缺陷全量
  - B: 缺陷全量
- ⑥ PIN 脚的长度:
- 1 1.8mm
  - 2 2.0mm
  - 3 2.3mm

- ⑦ 塑胶类型:
- A: 塑胶有柱, 一方条与柱子相连, 另一条柱子前移
- B: 塑胶有柱, 两方条与柱子相连



RECOMMENDED PCB LAYOUT (TOP VIEW)  
TOLERANCE: ±0.05mm



深圳市鑫南天科技有限公司  
Shenzhen XinNanTian Technology Co., Ltd

DIMENSIONS INT: mm  
UNLESS OTHERWISE SPECIFIABLE  
DIMENSION TOLERANCE

X.X: ±	0.38
X.XX: ±	0.25
X.XXX: ±	0.10
ANGULAR: ±	1°

PRODUCT NAME: **HDMI 侧插式成品料号**  
HDMI 侧插式成品料号  
料号: X.XXX.XXX

DRAWING: COCO  
DATE: 2012/01/15

PRODUCT NO.: XNT-HDMI-V-0006  
CHECK: AG  
DATE: 2012/01/15

DRAWING NO.: XNT-026  
APPROVED: JEFF  
DATE: 2012/01/15

SCALE: NA  
DWG ID: P D  
REV.: A  
PAGE: 1 of 1

REVISION NO.	ECR NO.	DESCRIPTION	MARK	DATE
1				
2				